



2015 PARCC RESULTS

Information for DAC Meeting – January 12, 2016



Discover a World of Opportunity™

OVERVIEW OF THE CMAS PARCC

- The new tests provide our students and families a much clearer and more accurate picture about how students are performing on higher academic standards, and they should not be compared to results of the previous state exams.
- The results provide an important baseline on which we can build and move forward. .

CMAS PARCC—A NEW ASSESSMENT

- Who took the test?
 - Students in Grades 3-11 took the English Language Arts tests in English
 - Some students in Grades 3 and 4 participated in the Spanish field test (no scores released)
 - Students in Grades 3-8 took the Math tests
 - High school students took the Math tests if enrolled in Algebra I, Geometry, or Algebra II.
 - Note: There are no growth data currently, so there is no ability to see year-to-year improvement
- How was the test administered?
 - The test was administered online with the exception of some students who received accommodations and two schools that submitted waivers (Academy 360 and DDES)
 - Two windows: Performance Based Assessment (March) and End of Year (May) → combined to yield one final score
- What was the format of the test?
 - Some multiple choice questions and some technology enhanced items such as highlighting, drag and drop, and media-embedded items
- Are there any released PARCC test items?
 - Yes, they are published here:
<https://prc.parcconline.org/assessments/parcc-released-items>

CMAS PARCC—INFORMATION SHARING & NEXT STEPS

- Individual Student Reports (ISR) & Parent Letters
 - To schools by January 25th – up to schools to deliver to parents
 - If students have moved schools, parents will receive a letter to contact the school where student tested to receive scores
 - These letters will contain resources for parents regarding interpreting the score data and having conversations with their children about the results.
- School Performance Conversations
 - January 7th-22nd
 - Purpose is to review school-level CMAS PARCC ELA & Math Results from Spring 2015 with parents and provide resources for parents
- Parent Forum w/ Interim Superintendent
 - January 21st
- Spring 2016 Testing Window
 - March 14-April 29 – ELA & Math
 - April 11-April 29 – Science & Social Studies
- Additional info about PARCC: <http://standards.dpsk12.org/assessments>



PARTICIPATION RATE

RESULTS SUMMARY

- **Lower Participation Rates:** At the state level, participation rates are lower than what we used to see with CSAP/TCAP. DPS participation rates are quite a bit higher than the state in all grade levels but are much lower than TCAP participation rates. The lower the participation rate, the more caution one should exercise when interpreting results. **The federal expectation is 95% participation.**
 - **English Language Arts (ELA):** DPS participation rate 91.5%, State rate 81.9%
 - **Math:** DPS participate rate 91.8%, State rate 82.4%
 - Similar to statewide trends, DPS participation rates dropped significantly in higher grades: 85.1% in grade 9, 82.6% in grade 10 and 67.7% in grade 11

DPS PARTICIPATION RATES ARE HIGHER THAN THE STATE RATES IN ALL TESTS

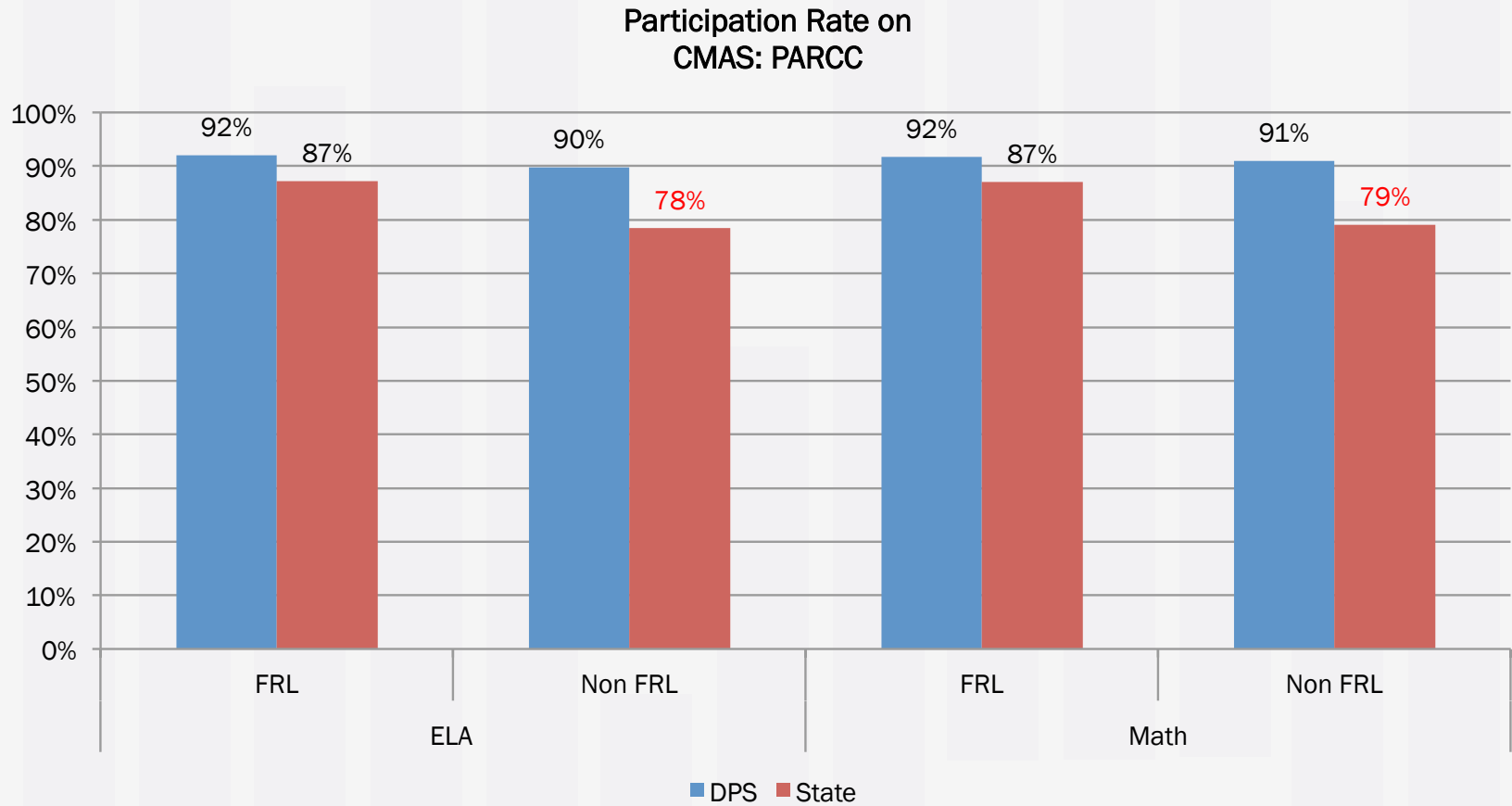
- However, the participation rates in the higher grade levels are very low.

English Language Arts		
Test	DPS	State
Grade 3	97.0%	95.0%
Grade 4	97.5%	94.9%
Grade 5	97.9%	94.6%
Grade 6	97.0%	92.4%
Grade 7	95.3%	88.7%
Grade 8	94.9%	85.0%
Grade 9	85.1%	70.5%
Grade 10	82.6%	61.8%
Grade 11	67.7%	50.4%
All	91.5%	81.9%

Math		
Test	DPS	State
Grade 3	97.6%	95.2%
Grade 4	97.8%	94.8%
Grade 5	98.0%	94.6%
Grade 6	95.9%	92.3%
Grade 7	95.2%	88.4%
Grade 8	94.6%	85.4%
Algebra I	80.6%	70.6%
Geometry	81.6%	61.9%
Algebra II	71.1%	50.6%
Integrated I	96.0%	78.1%
Integrated II	94.6%	68.2%
Integrated III	95.1%	57.2%
All	91.8%	82.4%

Note: 1) On 2014 TCAP, the participation rates were in the upper 90s across all grade levels.
 2) Integrated I, II and III are courses where algebra and geometry standards were taught together. Only a few schools offer these courses in DPS and the N-size is much smaller than the Algebra and Geometry tests.

GIVEN THE DIFFERENCES IN PARTICIPATION RATES BETWEEN FRL AND NON-FRL STUDENTS AT THE STATE LEVEL, STATE RESULTS ARE LIKELY ARTIFICIALLY LOW



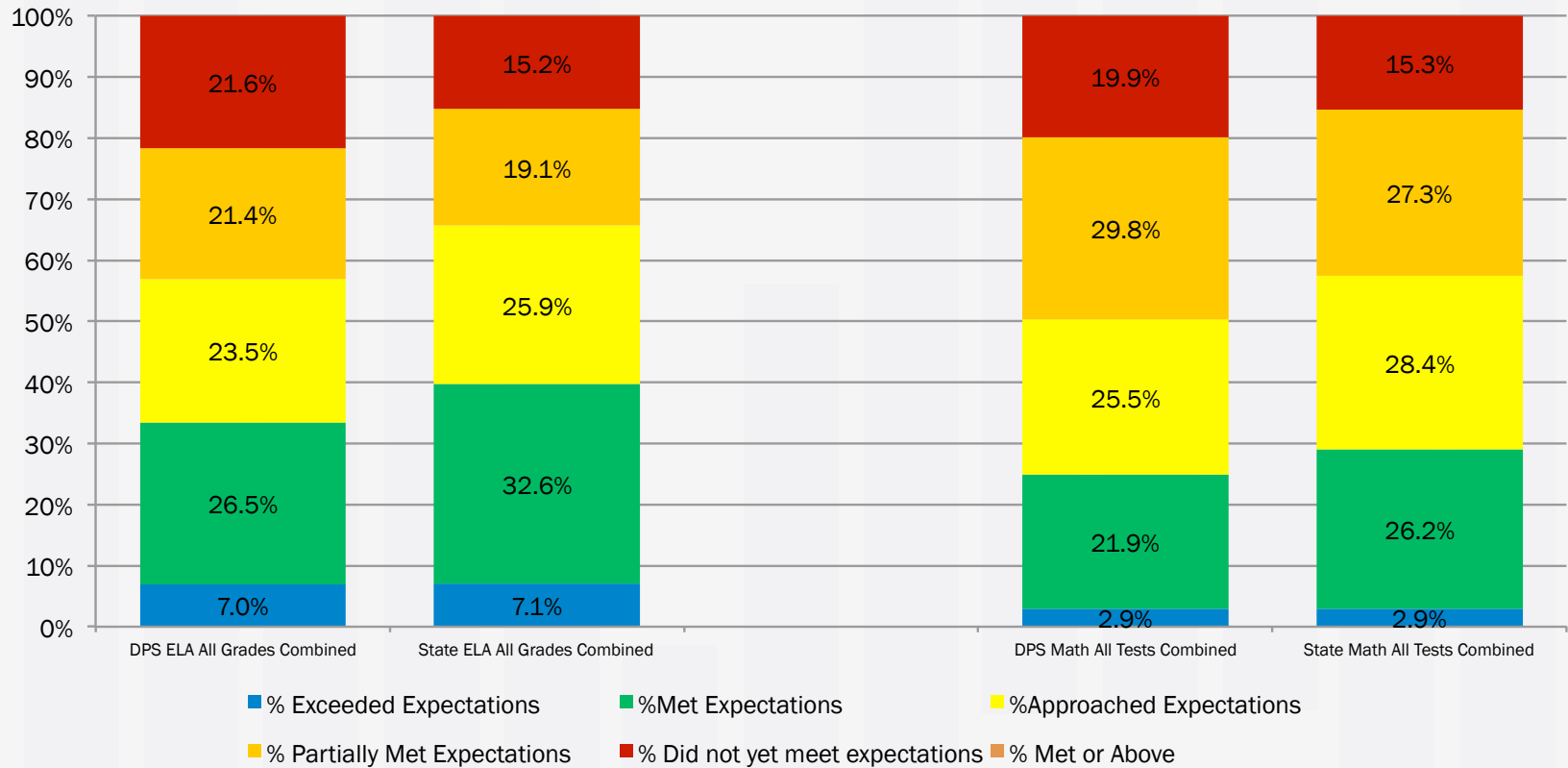
WHAT DPS IS DOING TO INCREASE PARTICIPATION RATES THIS YEAR

- ARE and CSO are working together to provide schools with scheduling guidance for the spring semester. Guidance includes example testing calendars, efficient ways to administer make-up tests, and appropriate ways to arrange for accommodations.
- Communicate to schools, parents, community, and students, especially in high schools, that the CMAS PARCC is part of the suite of College/Career Readiness exams.
- Central office is ensuring that schools are technologically ready by conducting school visits, infrastructure trials, and readiness checks
- In addition to the efforts above, this year, the CMAS PARCC will be administered in one single testing window - instead of two separate windows.

DISTRICT AND STATE RESULTS

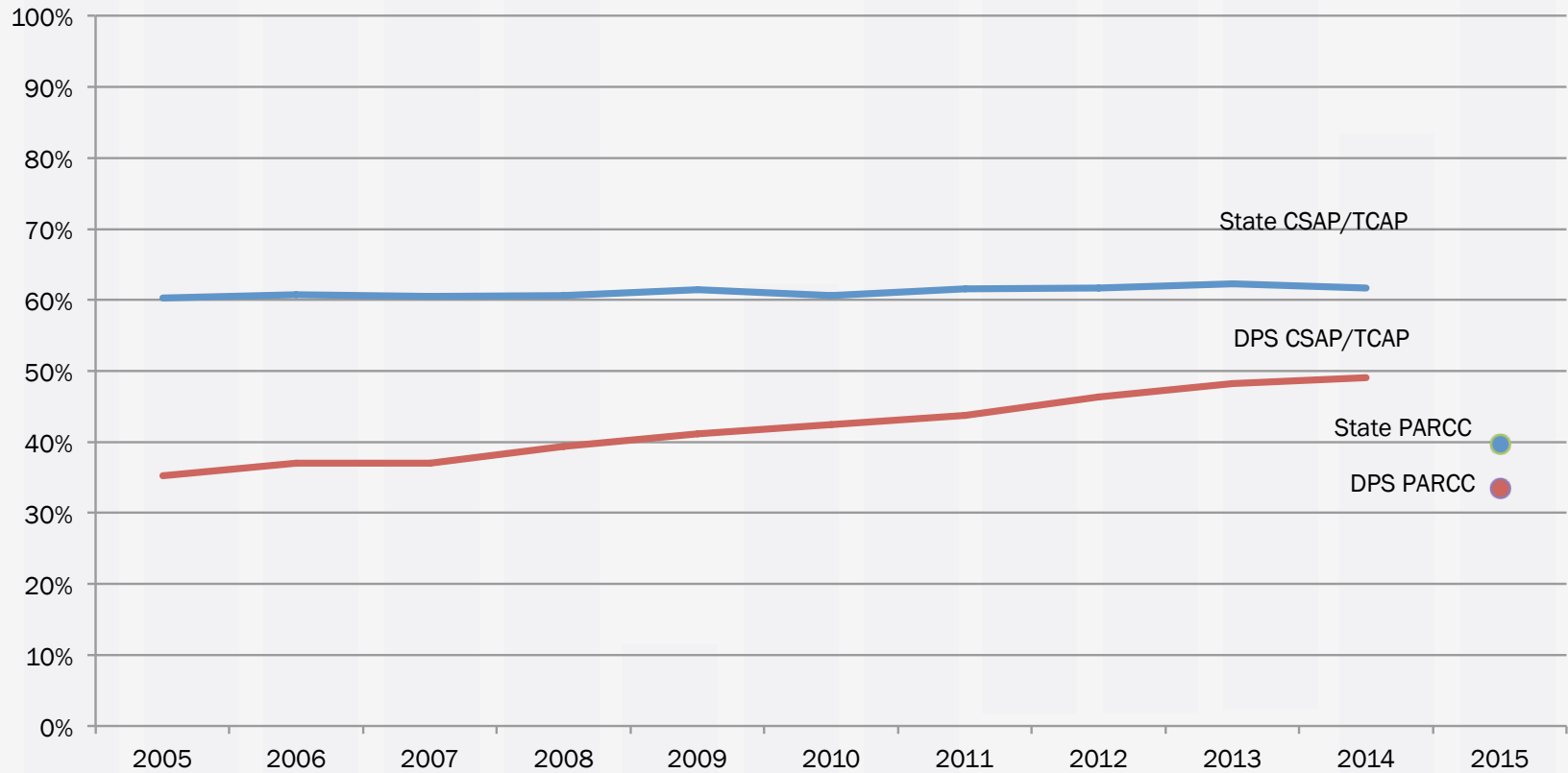
DPS PERCENT MEET EXPECTATIONS IS ONLY A FEW PERCENTAGE POINTS BELOW THE STATE'S

CMAS: PARCC DPS vs. State



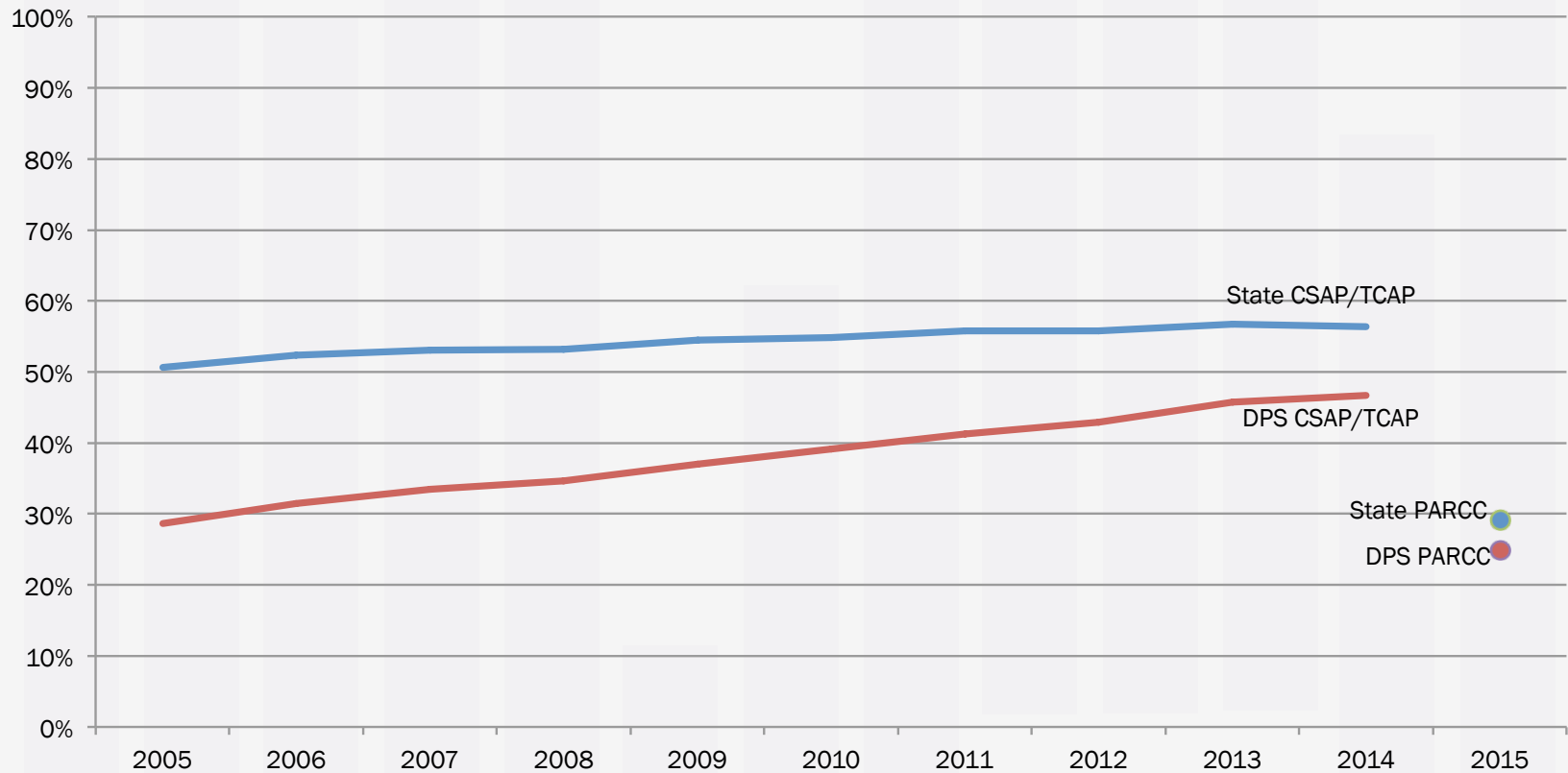
THE GAP BETWEEN DPS AND THE STATE IS SMALLER ON CMAS PARCC ELA THAN ON TCAP READING/WRITING COMBINED IN PREVIOUS YEARS

Historical State and DPS Performance on ELA



THE GAP BETWEEN DPS AND THE STATE IS SMALLER ON CMAS PARCC MATH THAN ON TCAP MATH IN PREVIOUS YEARS

Historical State and DPS Performance on Math





APPENDIX

TCAP, CMAS PARCC, AND CMAS SCIENCE AND SOCIAL STUDIES HAVE DIFFERENT PROFICIENCY BANDS

CSAP/TCAP
Advanced
Proficient
Partially Proficient
Unsatisfactory

CDE has informally indicated they will shift CMAS Science/Social Studies PARCC in the future.

CMAS PARCC	CMAS Science/Social Studies
Exceeded Expectations	Distinguished Command
Met Expectations	Strong Command
Approached Expectations	Moderate Command
Partially Met Expectations	Limited Command
Did Not Yet Meet Expectations	

HOW IS DISTRICT PARTICIPATION RATE DEFINED?

All students *who scored in levels 1-5* except students who withdrew before test completion, exempt for medical reasons, or homeschooled

District Participation Rate =

All students *who were rostered* to take the test except students who withdrew before test completion, exempt for medical reasons, or homeschooled

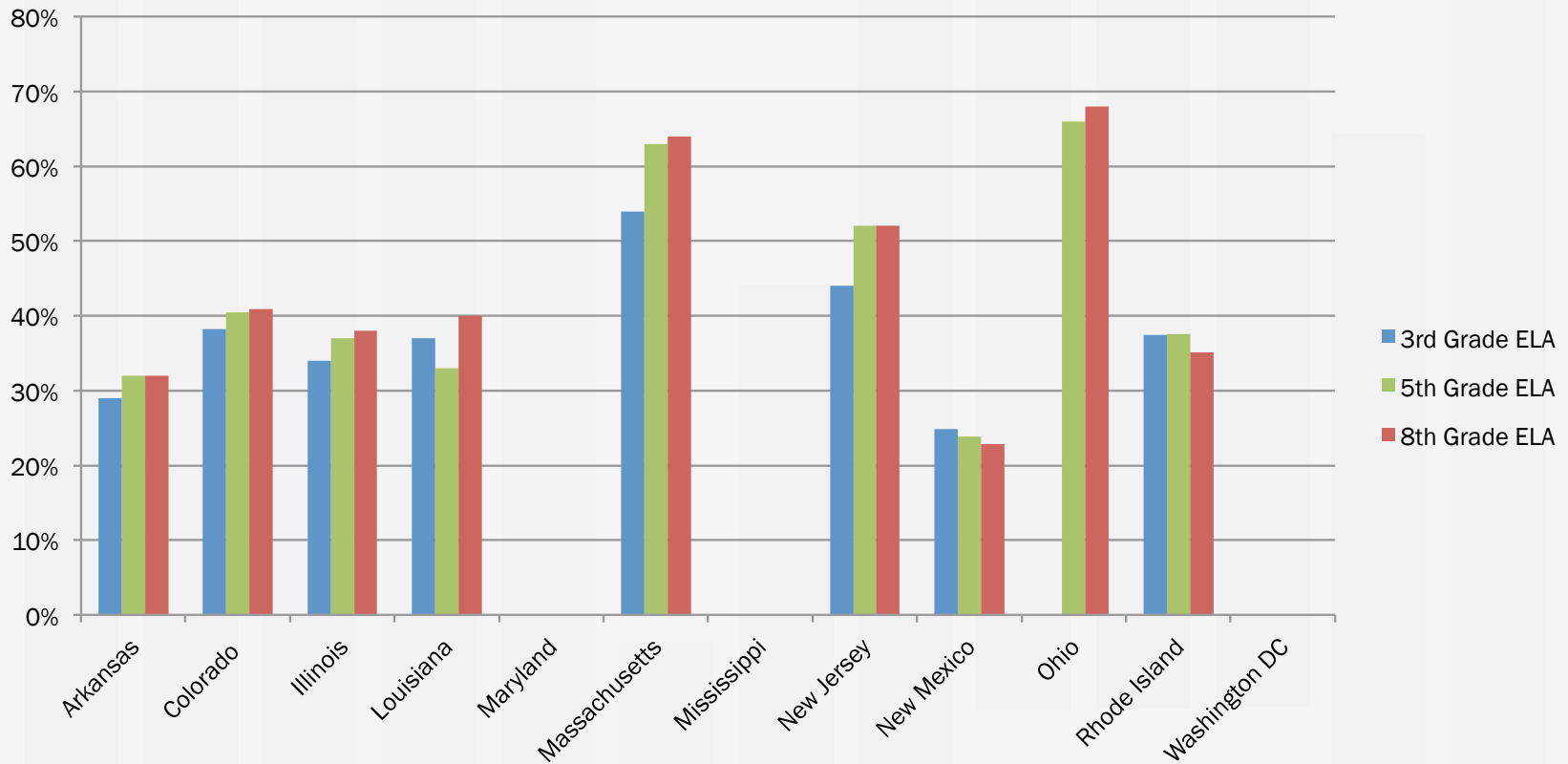
All students *who scored in levels 1-5* except students who withdrew before test completion, exempt for medical reasons, expelled, or and homeschooled

School Participation Rate =

All students *who were rostered* to take the test except students who withdrew before test completion, exempt for medical reasons, expelled, or homeschooled

COLORADO PERFORMANCE ON PARCC ELA RANKS IN THE MIDDLE OF THE PARCC STATES

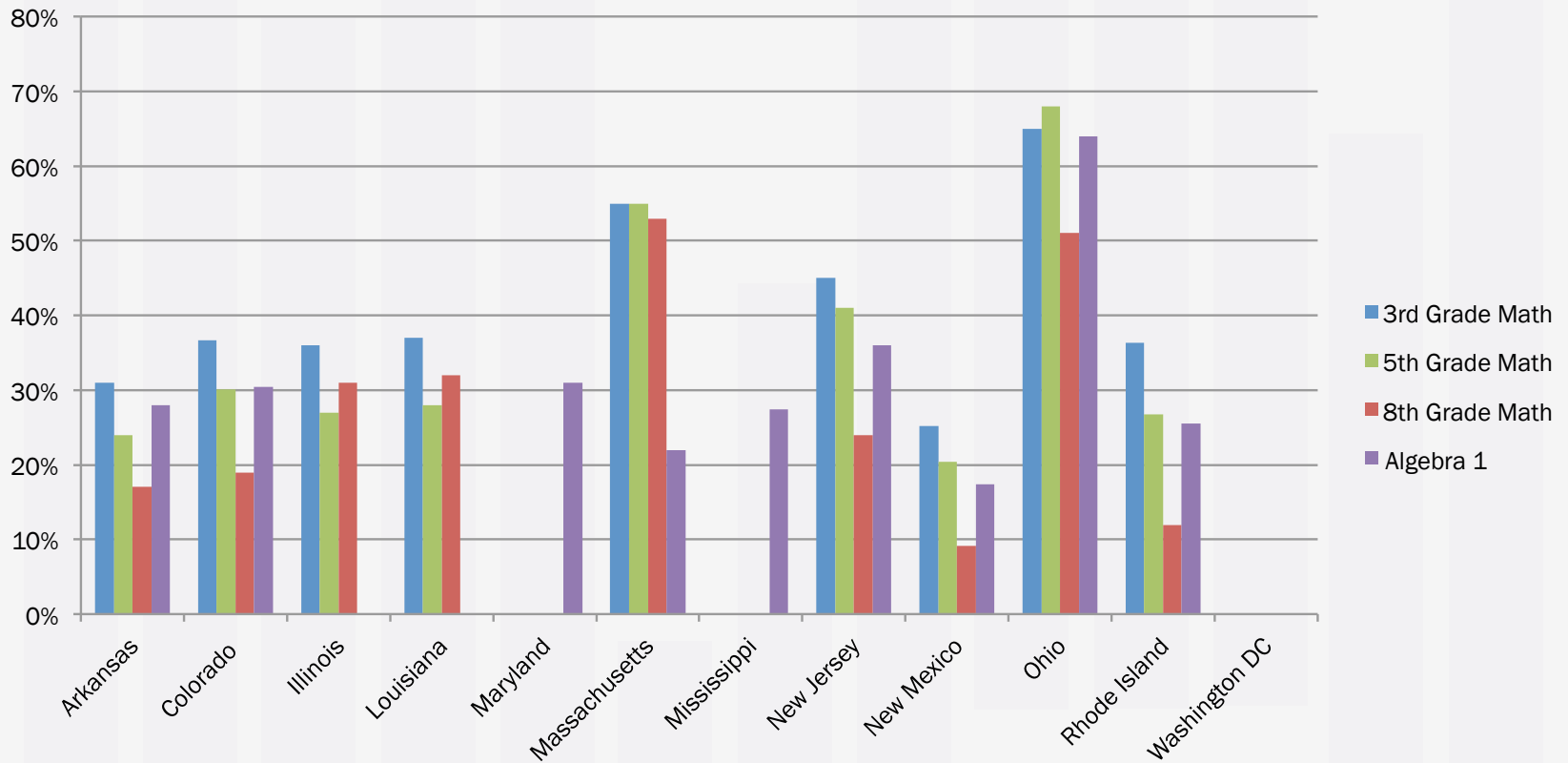
CMAS: PARCC ELA % Met Expectations or Above



Note: Data are reported differently by state; therefore not all data are represented in the chart.

COLORADO PERFORMANCE ON PARCC MATH RANKS IN THE MIDDLE OF THE PARCC STATES

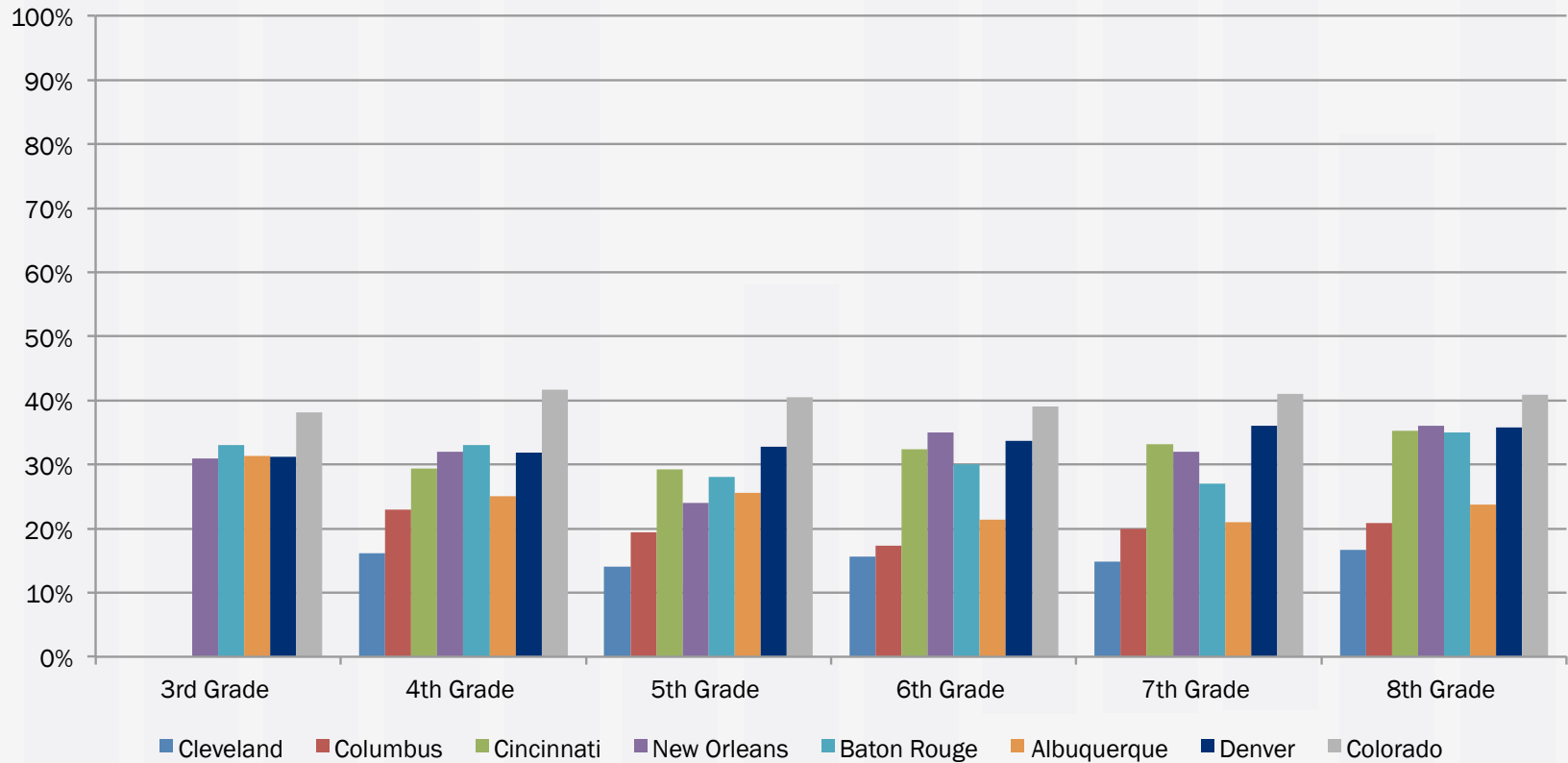
CMAS: PARCC Math % Met Expectations or Above



Test administration guidelines may differ across the states on whether 8th grade Math or Algebra 1 is administered to 8th grade students.

DPS OUTPERFORMED MANY OTHER LARGE PARCC DISTRICTS, BUT FEWER THAN 40% OF STUDENTS IN EACH DISTRICT MET EXPECTATIONS.

CMAS: PARCC ELA % Met Expectations or Above

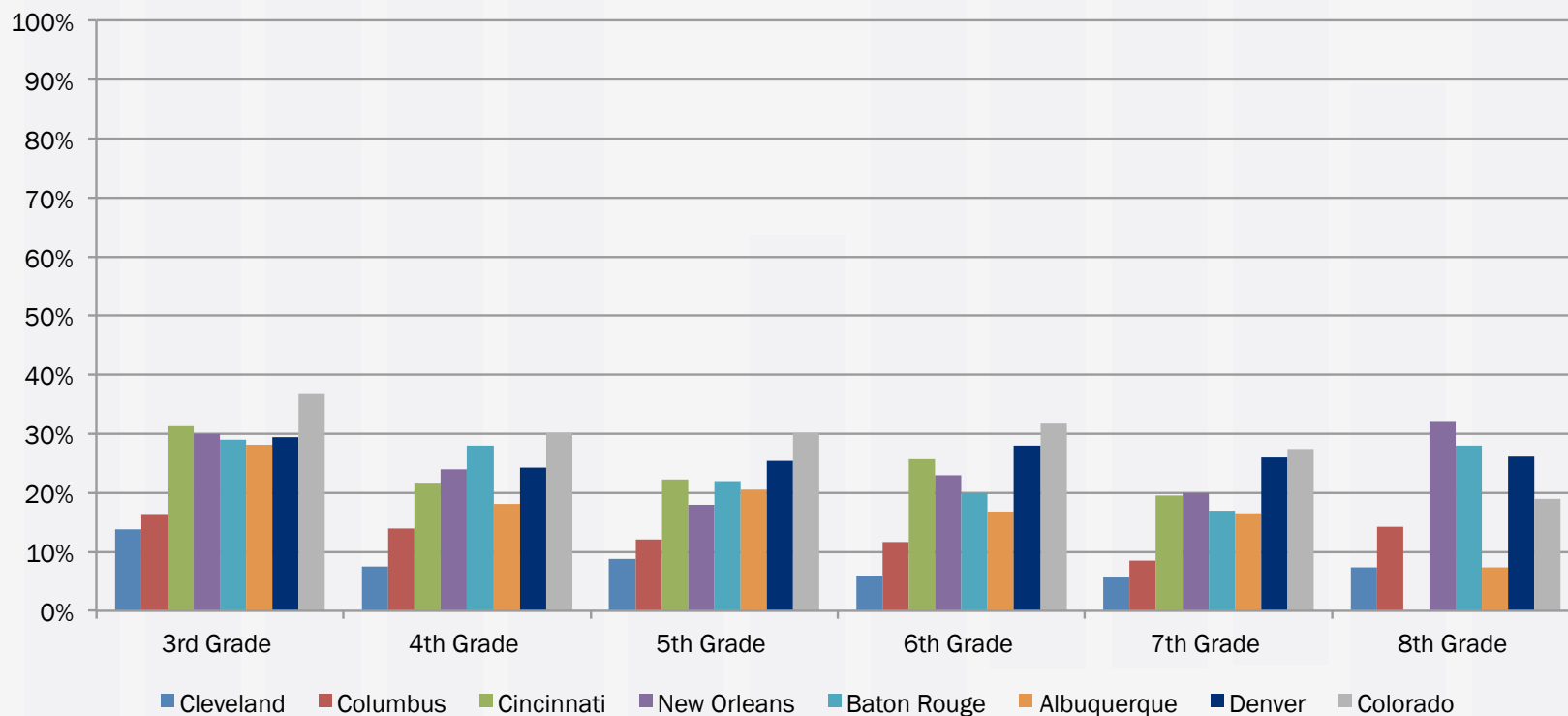


High school tests are not displayed due to low participation rates in DPS

Note: Some districts have not yet reported PARCC results and some (e.g., Boston) report the results without breaking out by grade level, and therefore are not represented in the chart.

DPS OUTPERFORMED MANY OTHER LARGE PARCC DISTRICTS, BUT FEWER THAN 40% OF STUDENTS IN EACH DISTRICT MET EXPECTATIONS.

CMAS: PARCC Math % Met Expectations or Above



High school tests are not displayed due to low participation rates in DPS

Note: Some districts have not yet reported PARCC results and some (e.g., Boston) report the results without breaking out by grade level, and therefore are not represented in the chart.