

Denver Public Schools Five-Year Goals

April 13, 2009

Denver Public Schools 5-Year Goals

Student Enrollment Goals

- DPS total enrollment will grow 500 students a year to a total exceeding 77,000 in 2012, from ECE-12, including charter school students.
- By 2013, 84% of children in DPS will re-enroll in district schools the following year, excluding students graduating out of the district.

School Readiness Goal

- By 2013, full-day Kindergarten will be available to 100% of parents who choose to enroll their student in a full-day program.
- An additional 3.5% of 3rd Grade students will become proficient on CSAP in reading or Lectura each year for the next five years. The five-year target is an overall district proficiency rate of 68% in 2013.

School Success Goal

- The number of schools scoring above 50% of possible points on SPF will grow by 3.5% annually.

Student Growth Goal

- The percentage of students scoring above the state median percentile on CSAP, thereby demonstrating above-average performance, will grow by 2.0% each year.
- The performance gap between Asian / Caucasian students and African-American and Hispanic students scoring Proficient & above on CSAP will decrease by 3.5% annually, closing the achievement gap.

Denver Public Schools 5-Year Goals

Student Performance Goals

- On average, the proficiency rate for grade level cohorts will increase 3.5% in reading, writing, and math over each year.
- On average, the percentage of students scoring unsatisfactory will decrease by 3.5% in reading, writing, and math each year.
- 3.5% of grade level English language learners will become proficient or better on the CELA Overall rating each year.

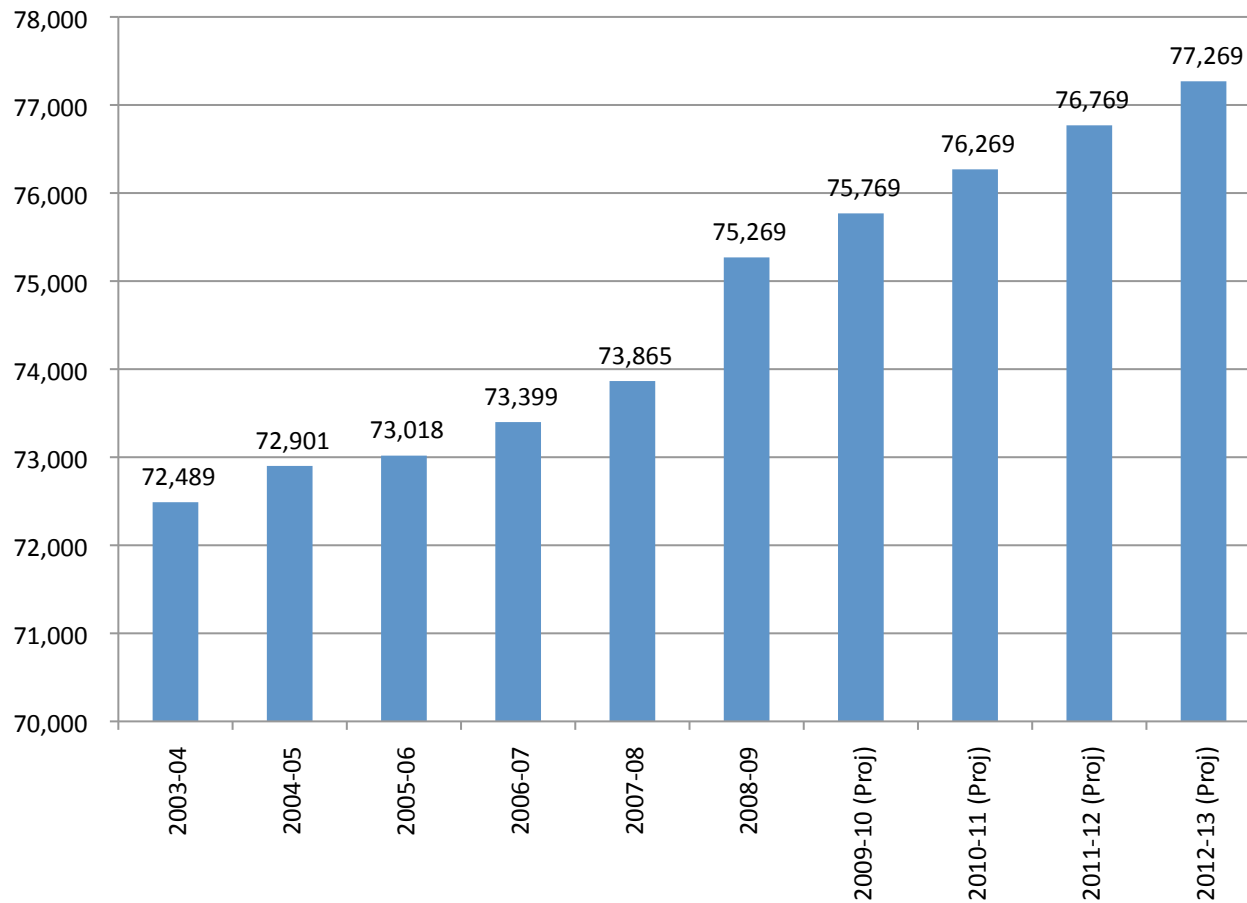
Postsecondary Readiness Goals

- The number of DPS students taking AP classes each year will grow by 3.5% and the number of students who take the test and who receive 3, 4 or 5 will increase by 3.5% per year.
- The number of DPS students concurrently enrolled in college classes will grow by 3.5% per year.
- The number of students scoring 20 or better on the ACT will grow by 3.5% students per year by 2013.
- The graduation rate for DPS students will increase by 5% per year to reach 82% in 2012 (base of 52% for 06-07).
- The dropout rate for DPS students will decrease by 1.0% per year to be 4.4% by 2012.
- College enrollment rates will grow by 3.5% each year to 63% in 2013.

Enrollment

Goal: At least 500 additional students per year

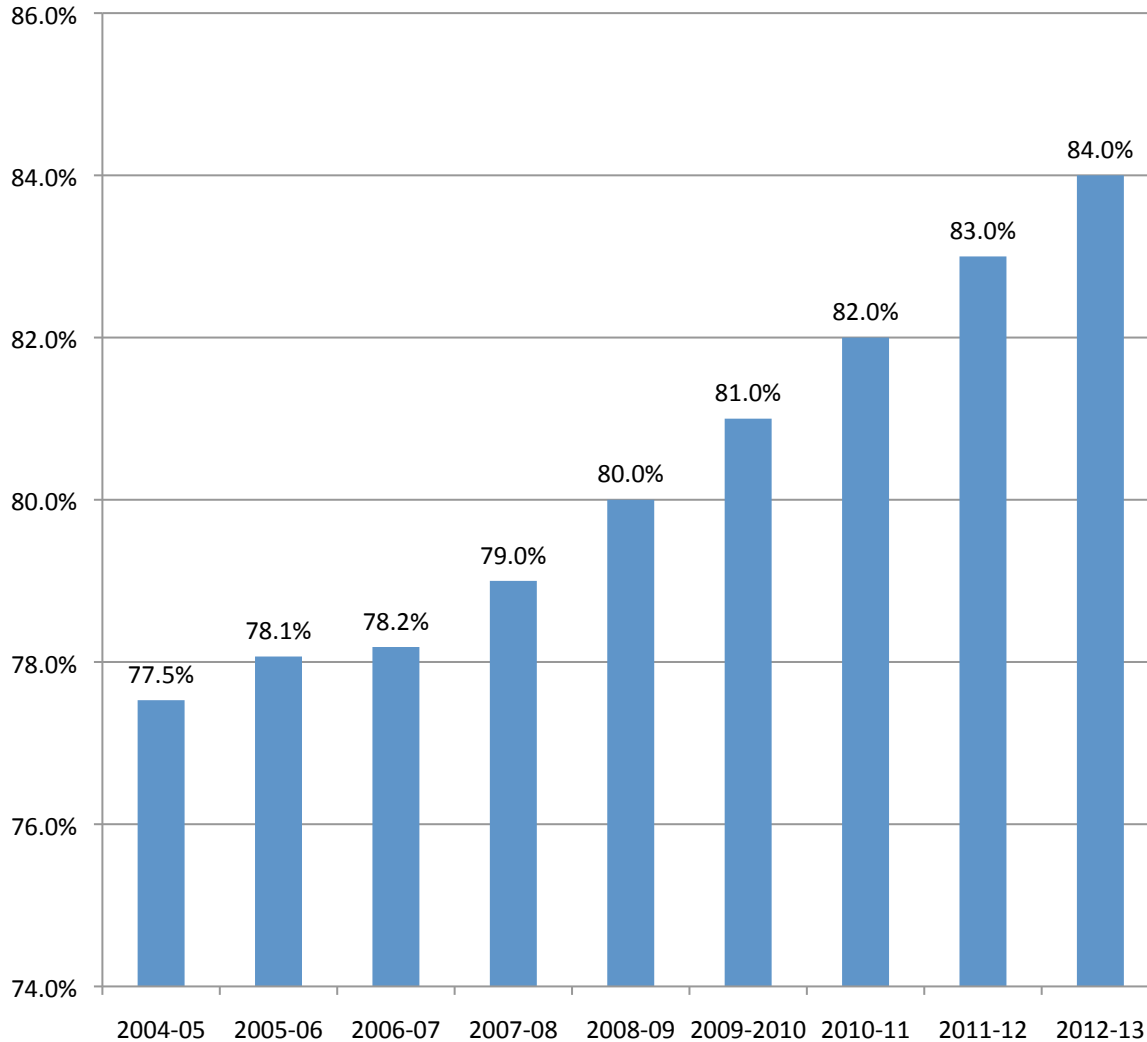
Number of Students PreK - 12



- Goal is to grow by 500 students per year (3.4% total growth in enrollment from 2007-08 to 2012-13)
- Enrollment number includes ECE – 12 for district and charter schools

Re-enrollment Rate

Goal: At least 84%

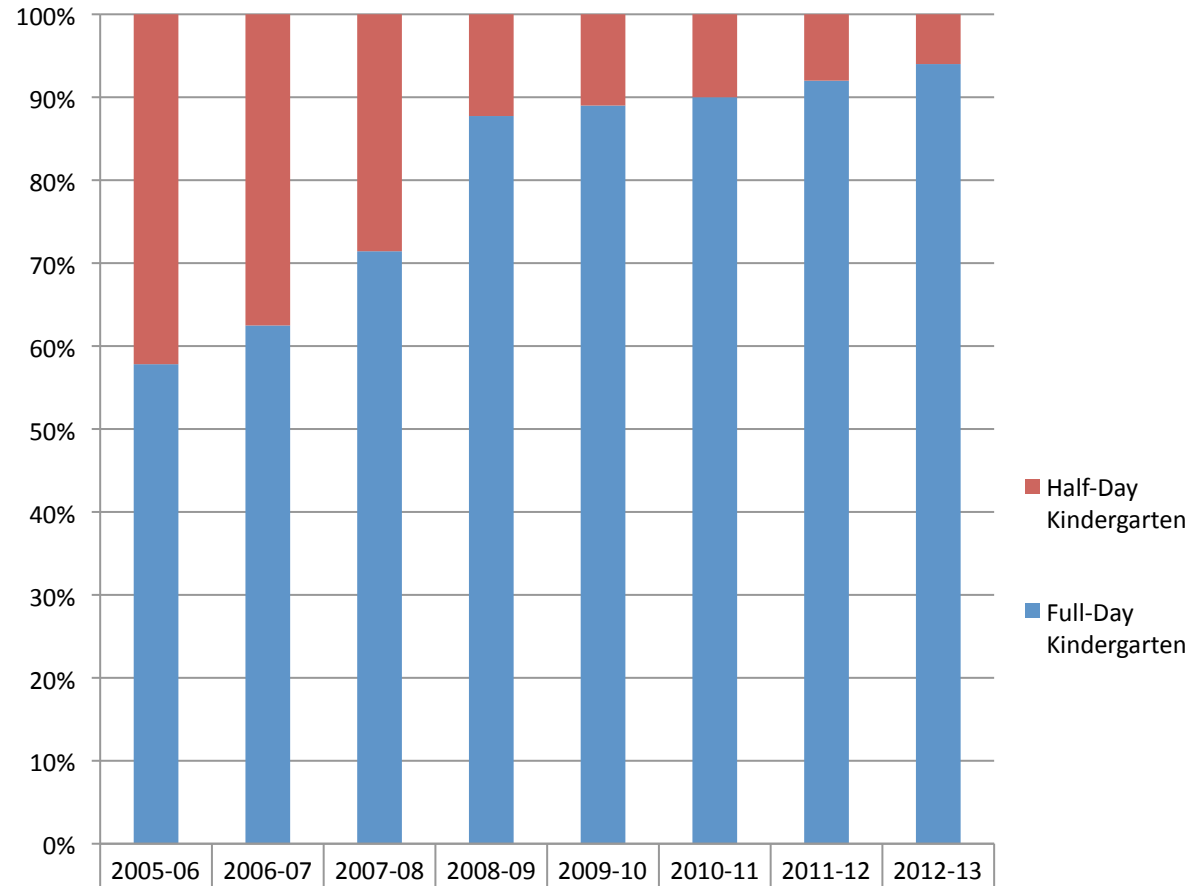


- Re-enrollment is the percentage of students who continue in Denver Public Schools in grades K-11
- Goal excludes students graduating from DPS schools
- 1150 more kids each year would re-enroll, with 7000 more students in 2012 over 2007

Participation in Full-day Kindergarten

Goal: Available to 100%

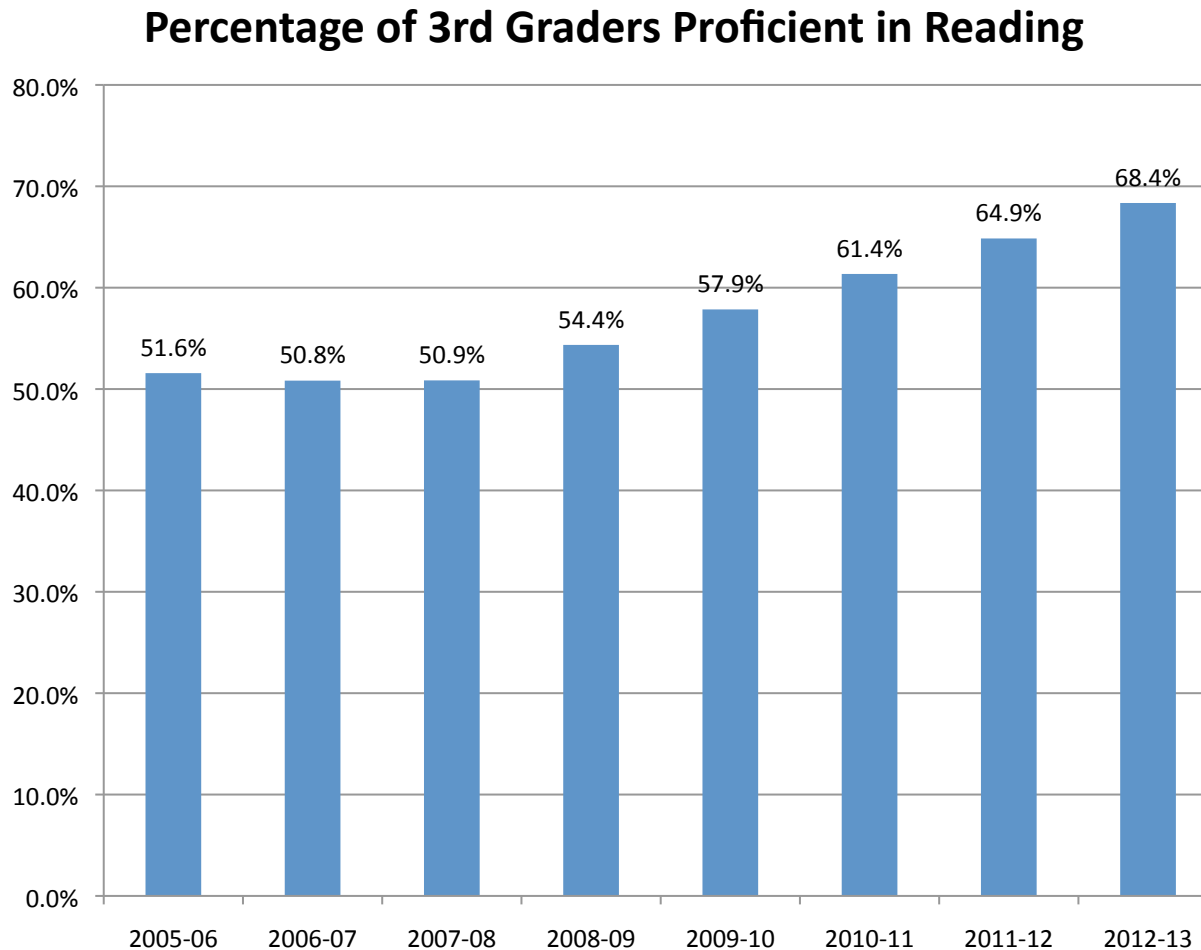
- By 2013, Full-day Kindergarten will be available to 100% of parents who choose to enroll their students in full-day programs.
- FDK spots will be available at neighborhood schools.



| | 2005-06 | 2006-07 | 2007-08 | 2008-09 | 2009-10 | 2010-11 | 2011-12 | 2012-13 |
|-----------------------|---------|---------|---------|---------|---------|---------|---------|---------|
| Half-Day Kindergarten | 2534 | 2279 | 1864 | 800 | 792 | 740 | 608 | 468 |
| Full-Day Kindergarten | 3473 | 3796 | 4661 | 5722 | 6408 | 6660 | 6992 | 7332 |
| Total No. of Students | 6007 | 6075 | 6525 | 6522 | 7200 | 7400 | 7600 | 7800 |

3rd Grade Reading Proficiency

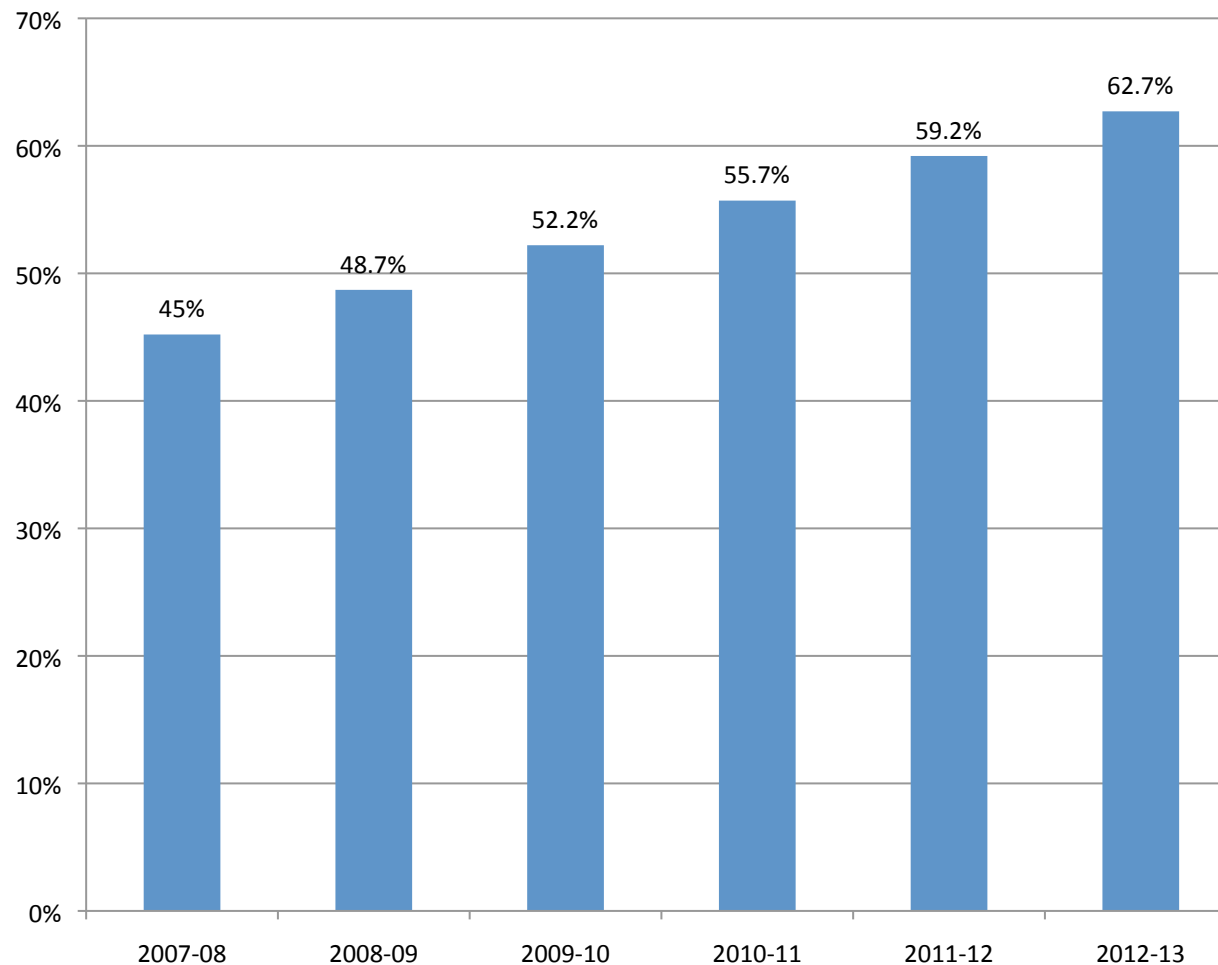
Goal: At least an additional 3.5% per year



- An additional 3.5% of 3rd Graders will be proficient on CSAP Reading or Lectura each year.
- Approximately 200 more students will be Proficient or Advanced each year.
- Goal is 68.4% in 2013, which is approximately 4000 students proficient per year.

School Success Rate

Goal: Increase percentage of schools with more than half of possible points on School Performance Framework by 3.5%



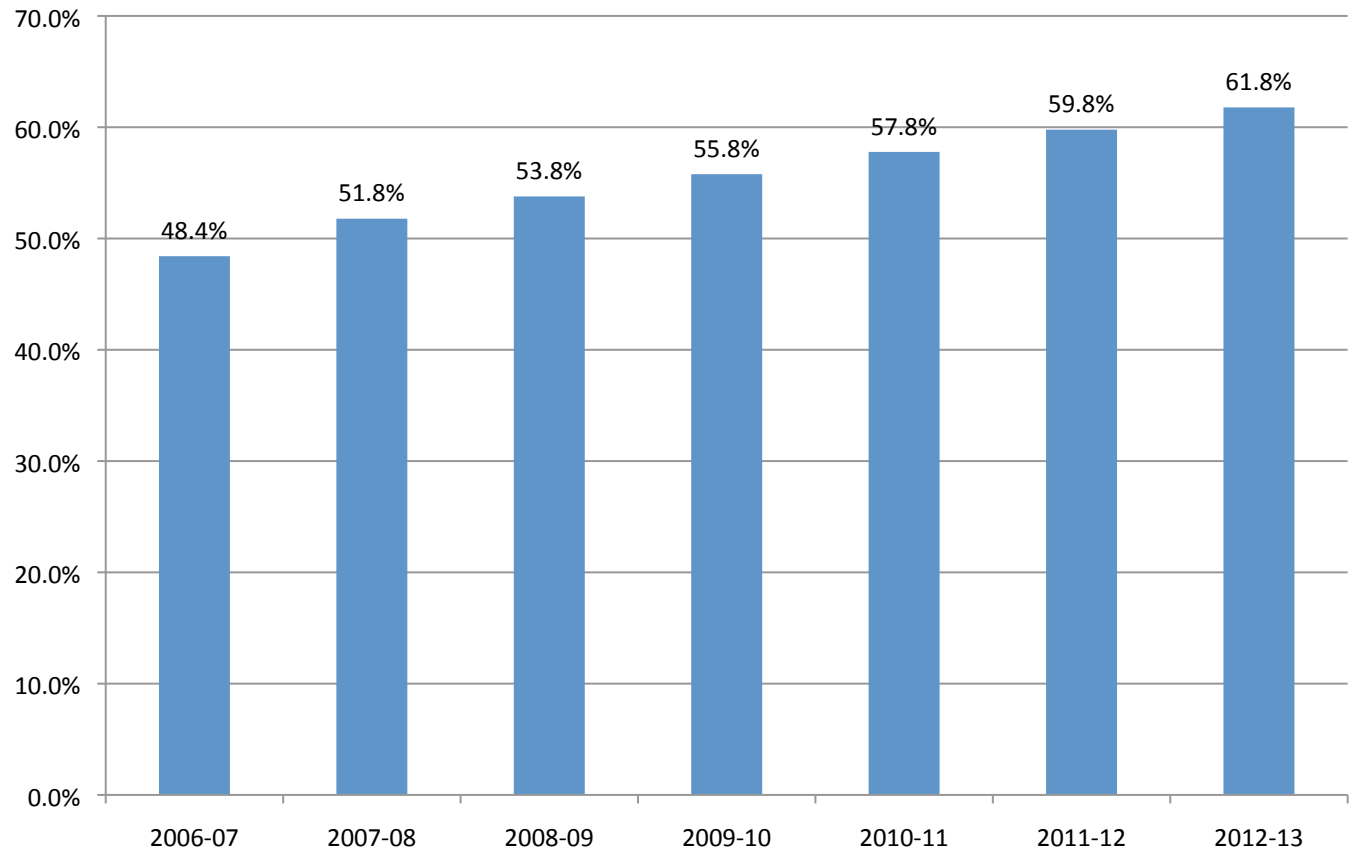
- The number of schools with Distinguished and Meets Expectations ratings will grow by 5 each year.
- These ratings take 2 years' growth into account.
- 2007-08 was the first year the SPF was used to rate schools.

Student Growth

Goal: At least an additional 2.0% of students will exceed the state's 50th Percentile for Growth

- Growing at or above the 50th percentile of the state on CSAP indicates above-average growth.
- 310 additional students will achieve this in each tested area each year. The total number of tested students per test is approx. 15,500.

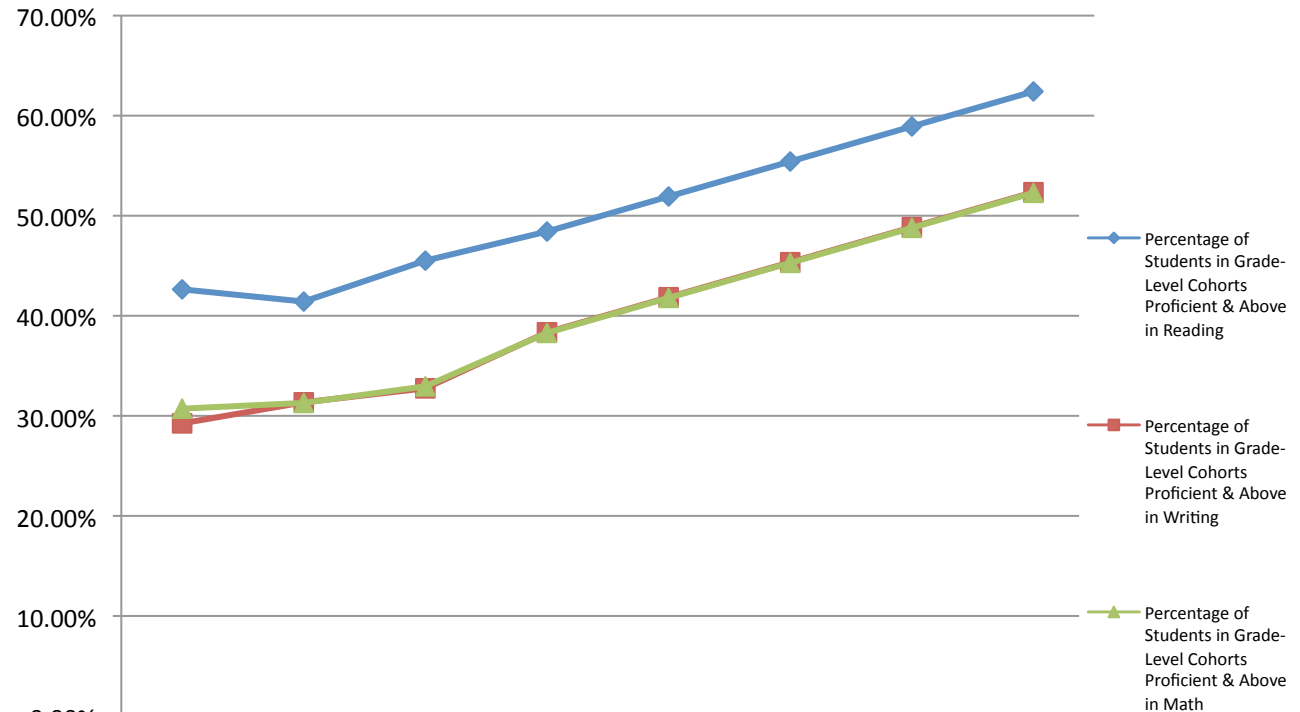
Percentage of Students Testing over State Median



Student Proficiency

Goal: Grade Level Cohorts will increase by at least 3.5% in reading, writing, and math

- 1050 additional students each year will be proficient in each subject area. Approximately 30,000 students are tested in each area.

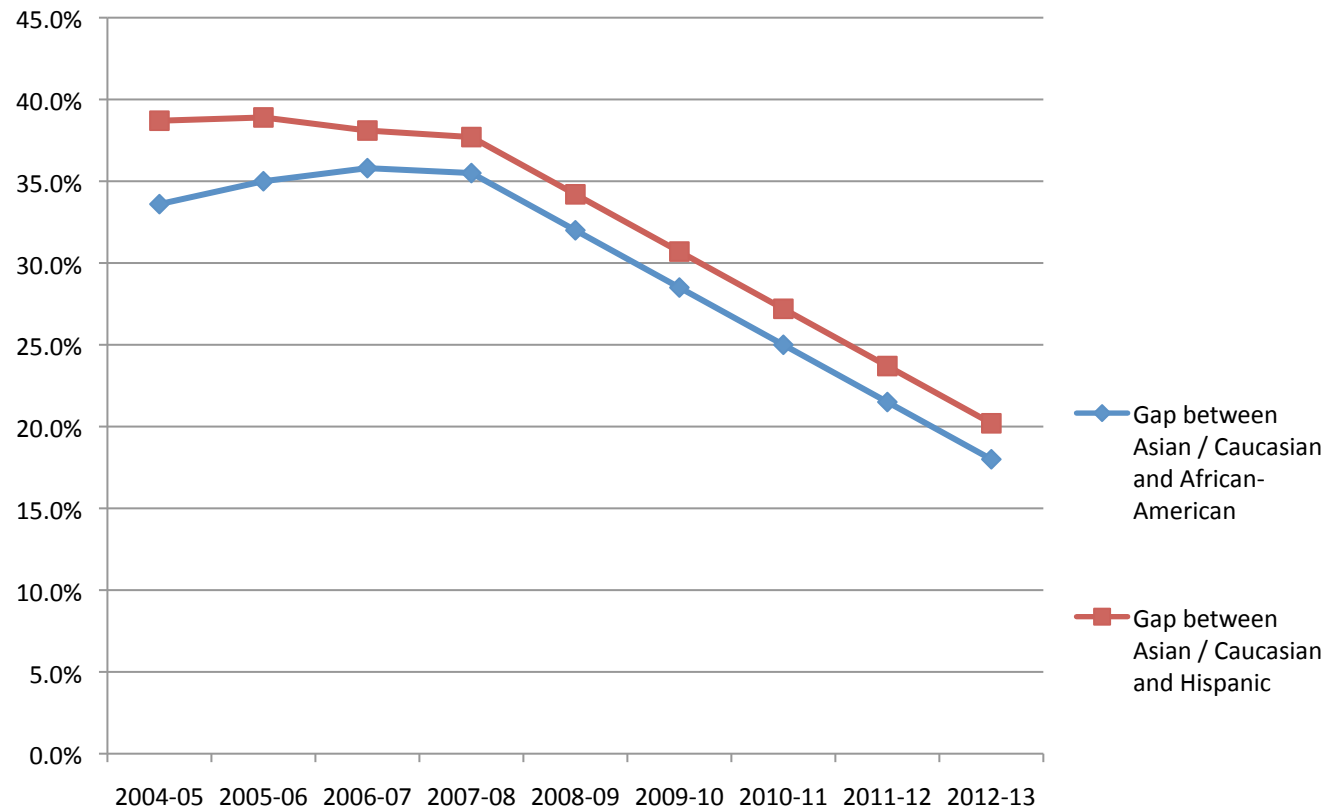


| | 2005-06 | 2006-07 | 2007-08 | 2008-09 | 2009-10 | 2010-11 | 2011-12 | 2012-13 |
|---|---------|---------|---------|---------|---------|---------|---------|---------|
| Percentage of Students in Grade-Level Cohorts Proficient & Above in Reading | 42.64% | 41.42% | 45.51% | 48.42% | 51.92% | 55.42% | 58.92% | 62.42% |
| Percentage of Students in Grade-Level Cohorts Proficient & Above in Writing | 29.25% | 31.35% | 32.75% | 38.35% | 41.85% | 45.35% | 48.85% | 52.35% |
| Percentage of Students in Grade-Level Cohorts Proficient & Above in Math | 30.72% | 31.29% | 32.95% | 38.29% | 41.79% | 45.29% | 48.79% | 52.29% |

Closing the Achievement Gap

Goal: The gap between Asian / Caucasian students and African-American and Hispanic students will decrease by 3.5% each year.

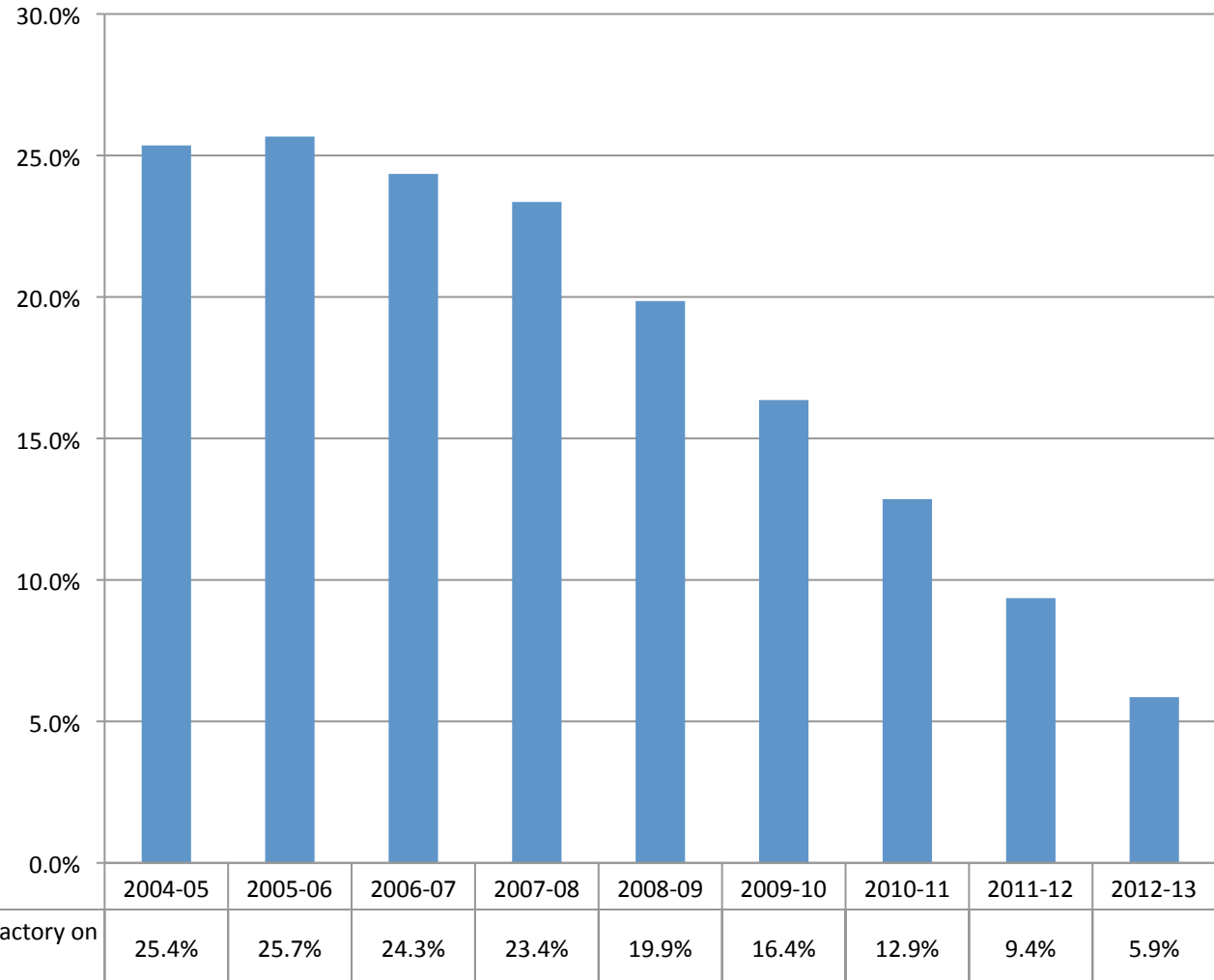
- By estimating Asian / Caucasian students' growth rates at 3.5% per year, the gap would close from 36% in 2008 to 18% in 2013.



Scoring Unsatisfactory

Goal: Percentage Scoring Unsatisfactory will decrease by at least 3.5%

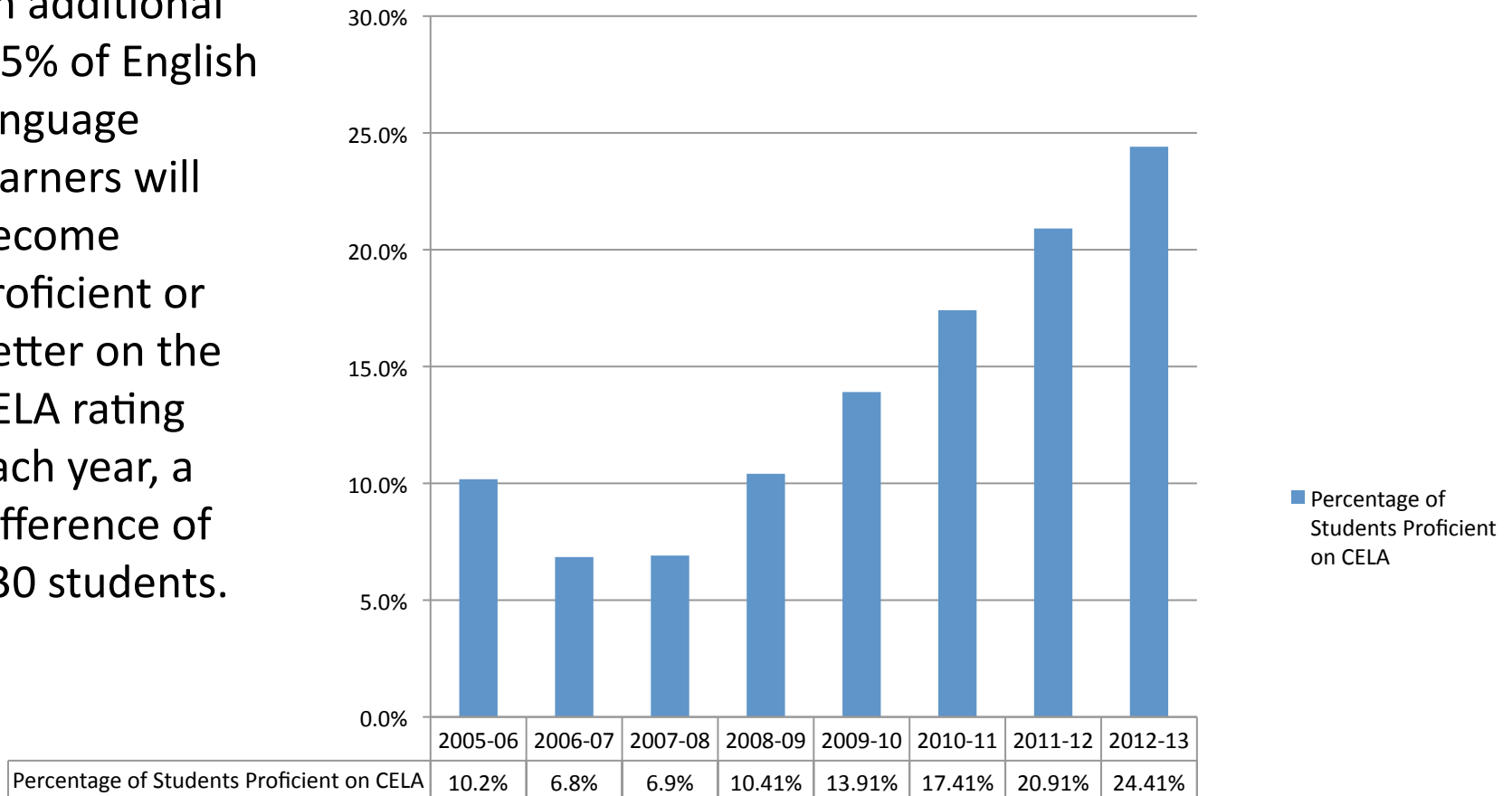
- The number of students scoring unsatisfactory on CSAP will decrease by 1400 students per tested area. Approximately 30,000 students are tested in each area.



English-Language Learner Proficiency

Goal: At least an additional 3.5% of ELLs per year will become proficient

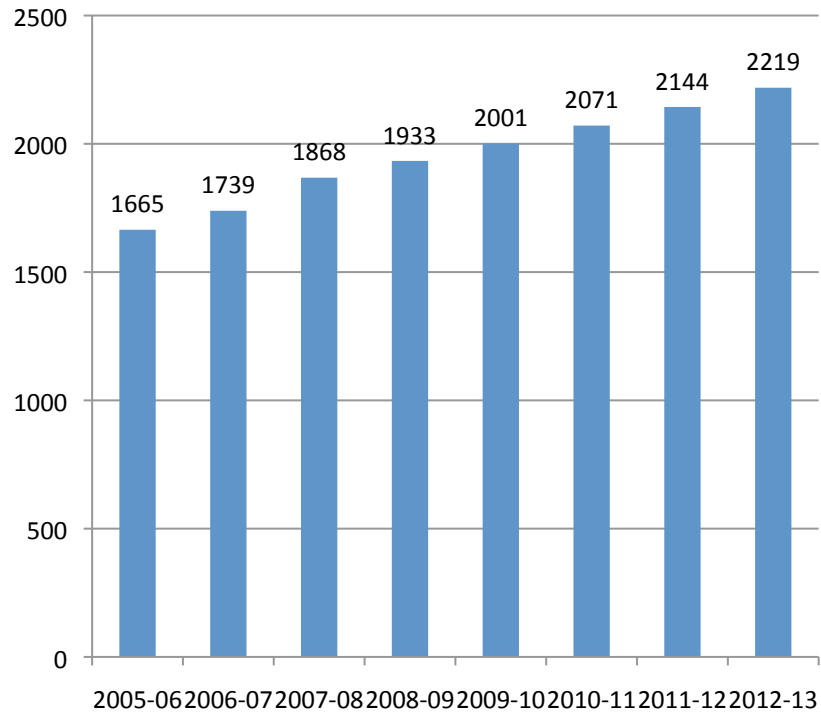
- An additional 3.5% of English language learners will become proficient or better on the CELA rating each year, a difference of 630 students.



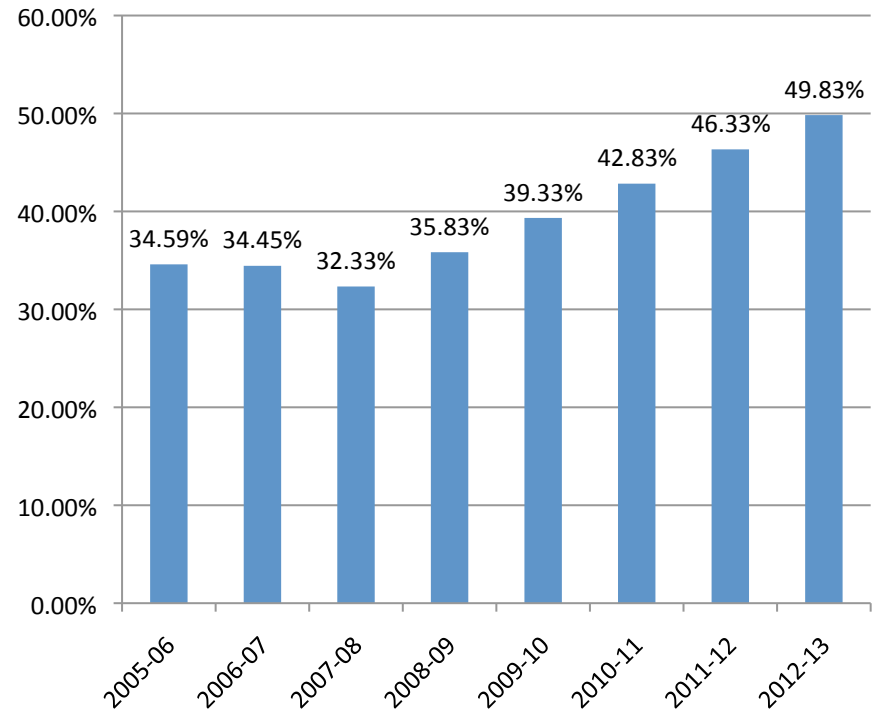
Advanced Placement

Goal: Number of students taking AP classes, the exam, and scoring 3+ will increase by at least 3.5%

Number of Students enrolled in AP Classes



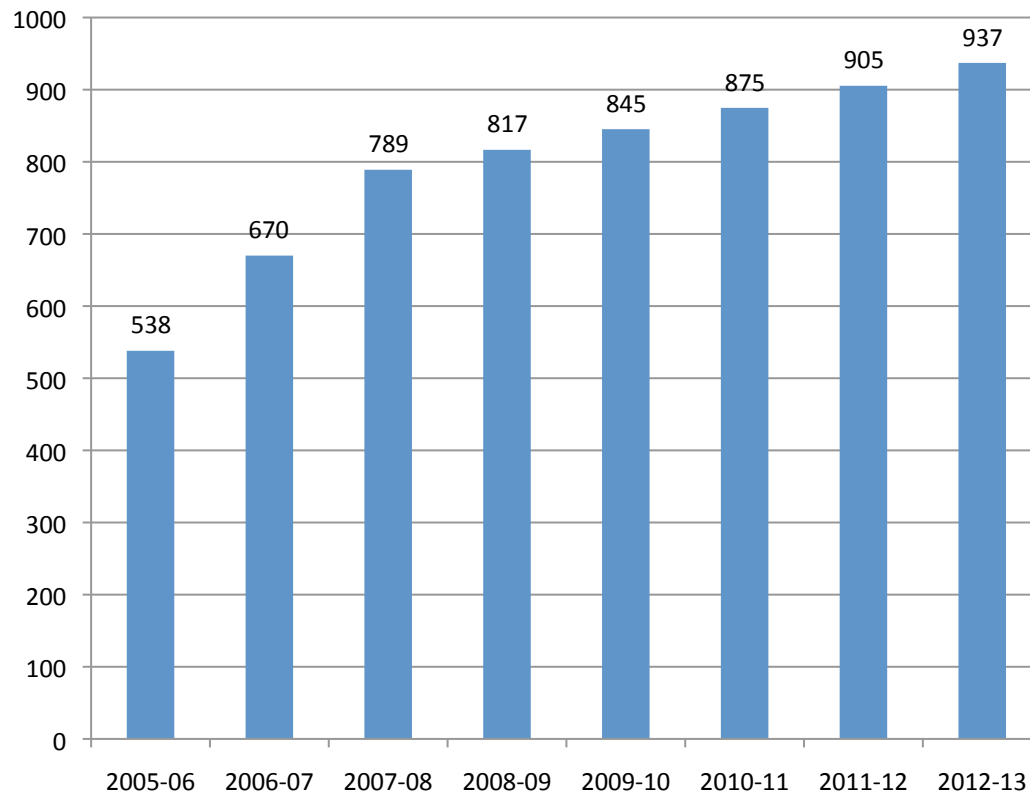
Percentage of Students who take AP test and receive 3+



Concurrent Enrollment

Goal: Number of students concurrently enrolled in college classes will increase by 3.5% per year

Number of Students Concurrently Enrolled in College Course



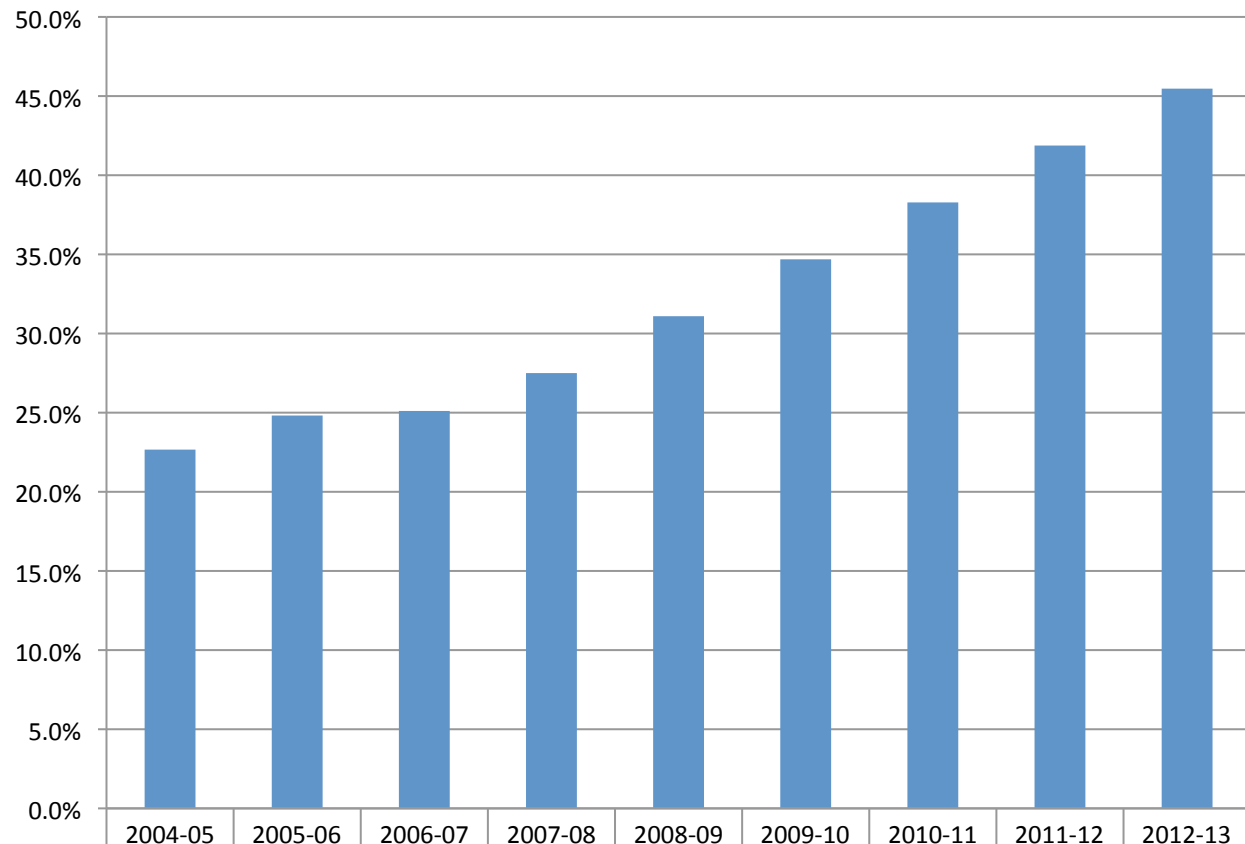
- Concurrent enrollment in college is a leading indicator of college enrollment, particularly for low-income and minority students
- An additional 30 students per year would concurrently enroll in college courses

Colorado ACT Performance

Goal: Increase percentage scoring 20+ by at least 3.5% per year

- The number of students scoring 20+ would increase 115 students per year. 3200 students take the ACT annually.
- An ACT score of 20 is required for most state colleges & universities.

Percentage of Students Scoring 20+ on ACT

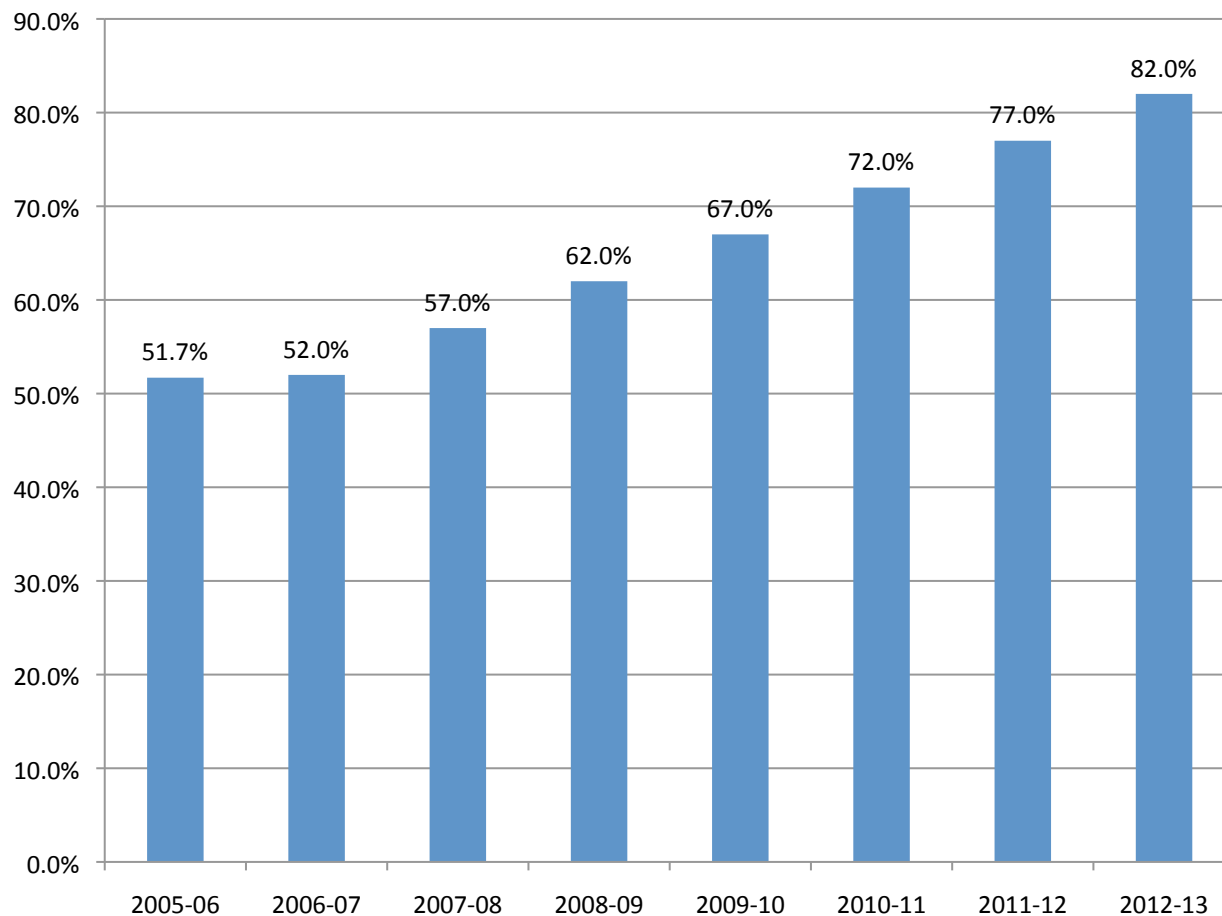


| | | | | | | | | | |
|---|-------|-------|-------|-------|-------|-------|-------|-------|-------|
| Percentage of Students Scoring 20+ on ACT | 22.7% | 24.8% | 25.1% | 27.5% | 31.1% | 34.7% | 38.3% | 41.9% | 45.5% |
| Number of Students Scoring 20+ | 762 | 786 | 818 | 880 | 1048 | 1163 | 1278 | 1393 | 1508 |

Graduating Students

Goal: Grad rate will increase at least 5.0% each year

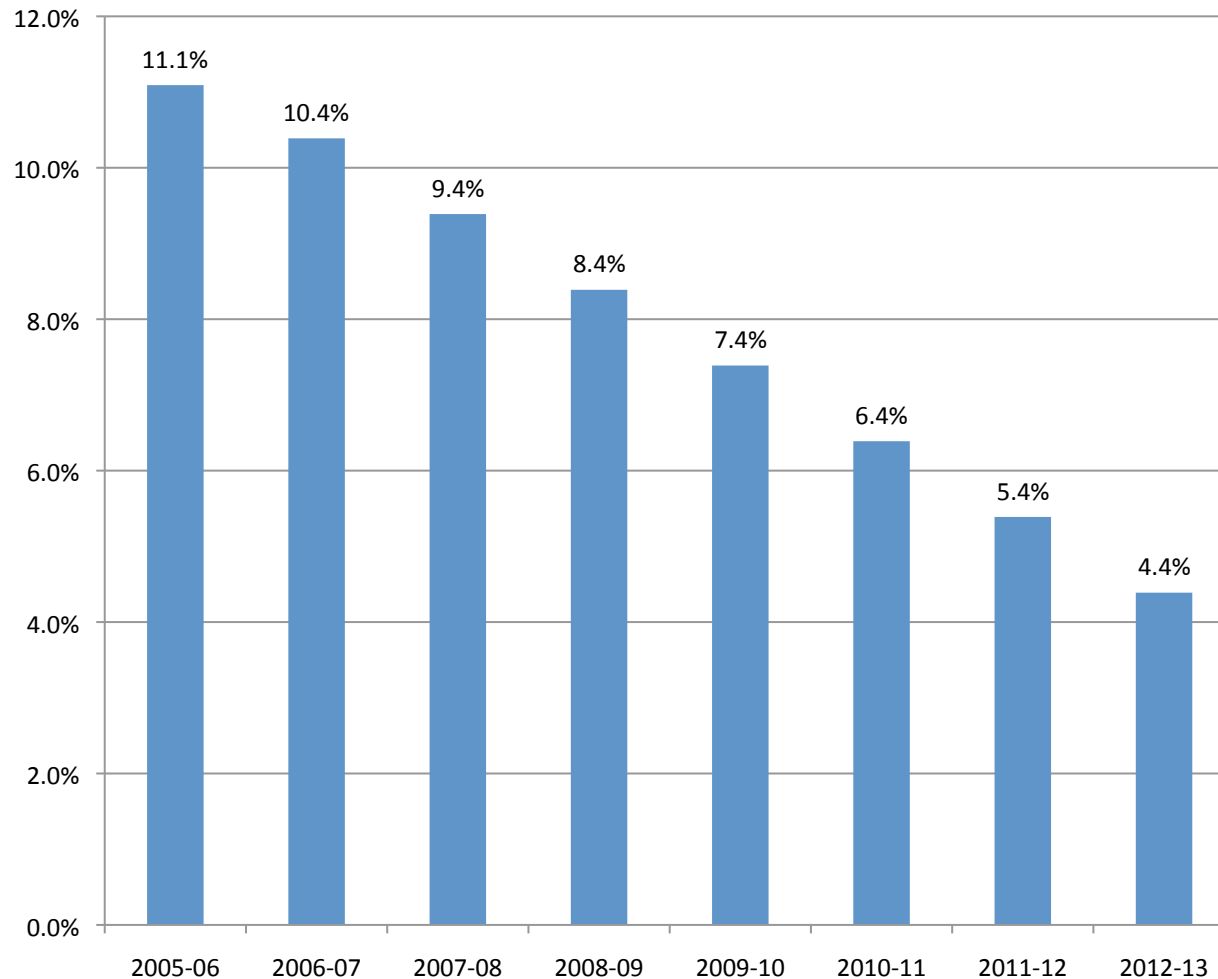
Percentage of Students graduating from DPS



- The graduation rate for DPS students will increase 5% each year, an increase of 1650 students annually by 2013.
- The goal is graduation rate of 82% in 2013.

Dropout Rate

Goal: Dropout rate will decrease at least 1.0% each year

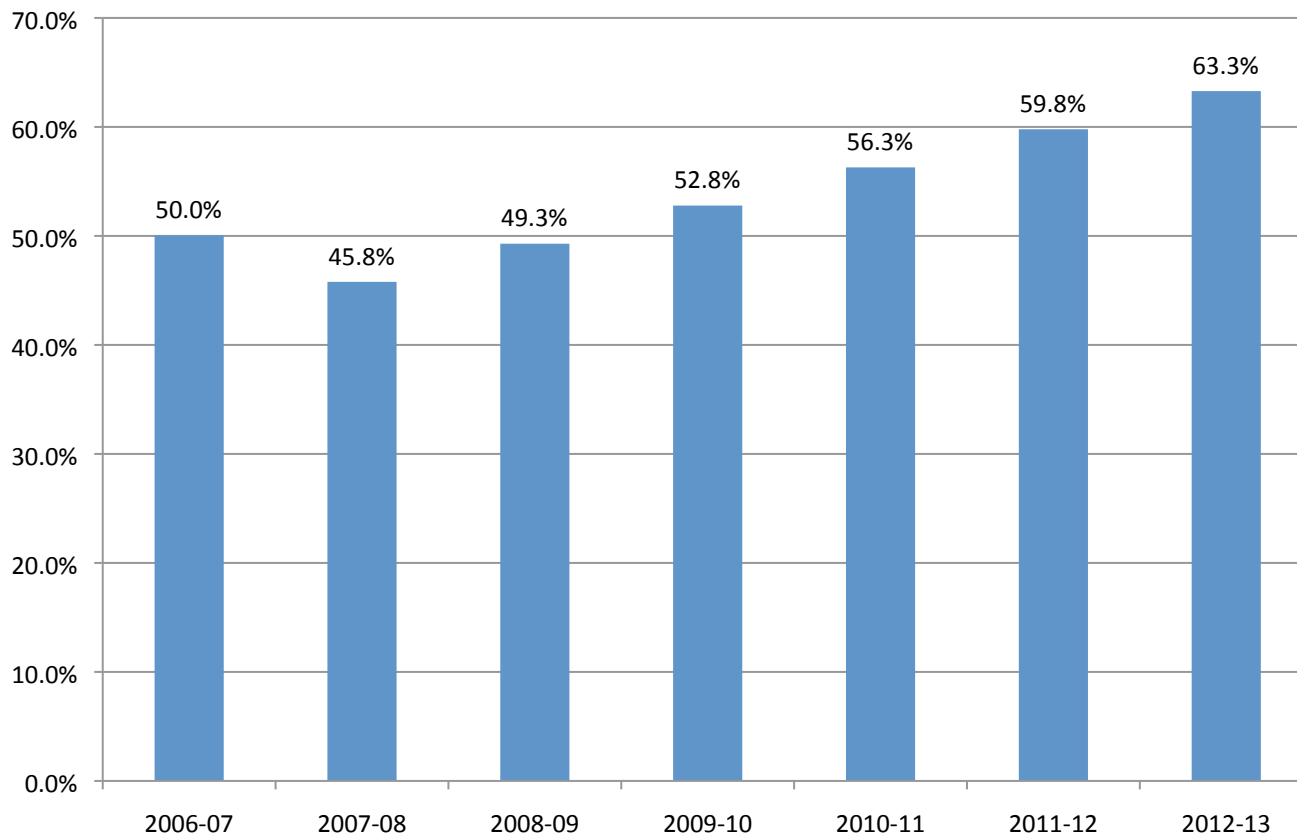


- The dropout rate for DPS students will decrease 1.0% each year, approximately 360 students per year.
- This calculation is cohort-based and includes district, alternative and charter schools.

College Enrollment

Goal: College enrollment rates grow by at least 3.5% each year

Percentage of Students enrolling in college



- The college enrollment rate for DPS students will increase 3.5% each year, an increase of over 800 students by 2013.
- The goal is college enrollment rate of 63% in 2013.